

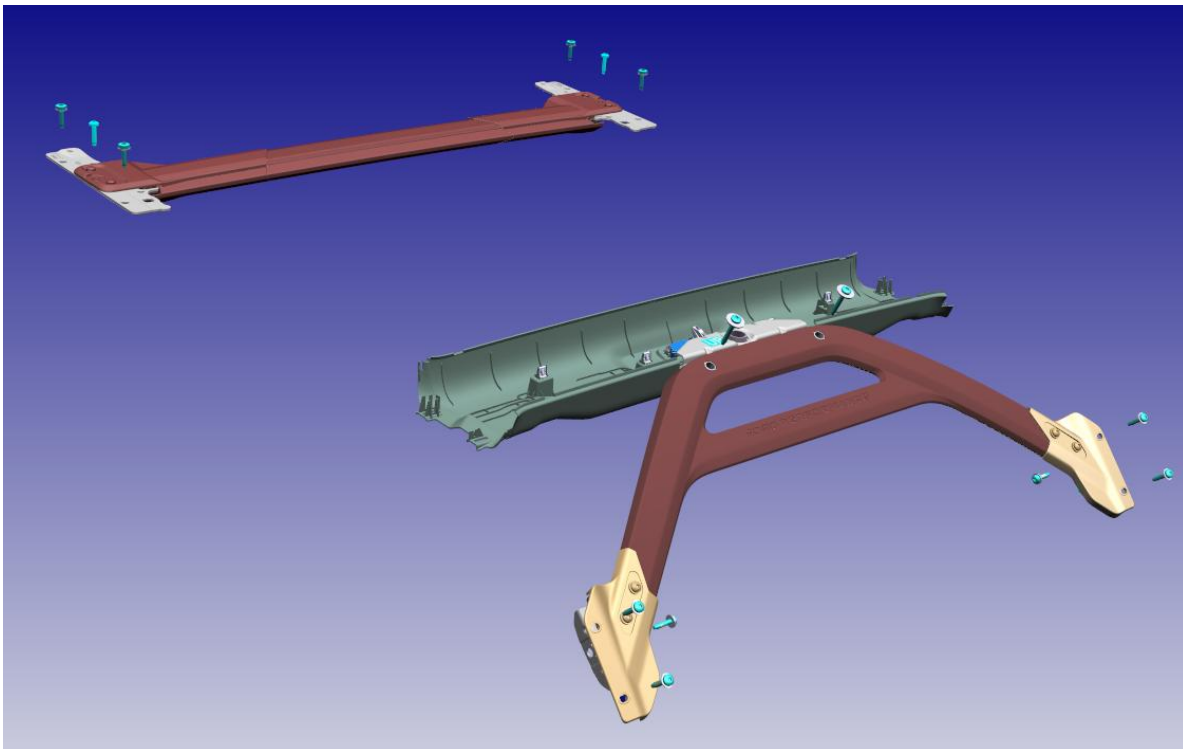


M-20201-CBBK
2022-2024MY Bronco
B-Bow & C-Bow Brace Kit

NO PART OF THIS DOCUMENT MAY BE REPRODUCED WITHOUT PRIOR AGREEMENT AND WRITTEN PERMISSION OF FORD PERFORMANCE PARTS © Ford Motor Company 2020

PRIOR TO INSTALLATION READ THESE INSTRUCTION COMPLETELY
For questions, Call the FORD PERFORMANCE Techline 1-800-367-3788

Please visit <https://www.performanceparts.ford.com> for warranty information

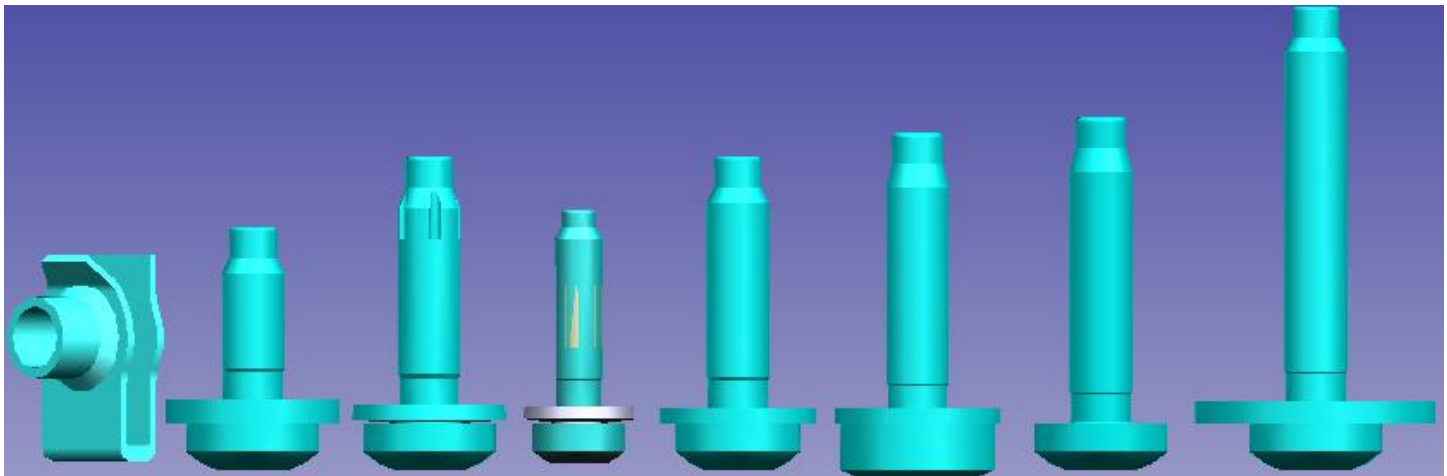


Ford Factory Shop Manual purchase options www.motorcraftservice.com

NO PART OF THIS DOCUMENT MAY BE REPRODUCED WITHOUT PRIOR AGREEMENT AND WRITTEN PERMISSION OF FORD PERFORMANCE PARTS © Ford Motor Company 2020

Kit contents:

Description	Quantity
B-Bow Brace	1
B-Bow Brace Bracket (Left)	1
B-Bow Brace Bracket (Right)	1
B-Bow Bolt & Washer (M8x21)	4
B-Bow Interior Trim Piece (Center)	1
B-Bow Interior Trim Piece (Left)	1
B-Bow Interior Trim Piece (Right)	1
B-Bow Bolt (M8x35)	2
B-Bow Bolt & Washer (M8x33)	4
B-Bow Bolt & Washer (M6x25)	2
C-Bow Brace Bracket	1
C-Bow Brace	1
C-Bow Bolt & Washer (M8x49)	2
C-Bow J Clip (M8)	2
C-Bow Bolt & Washer (M8x24)	2
C-Bow Bolt & Washer (M8x30)	6
C-Bow Interior Trim Piece	1



J Clip

21mm

24mm

25mm

30mm

33mm

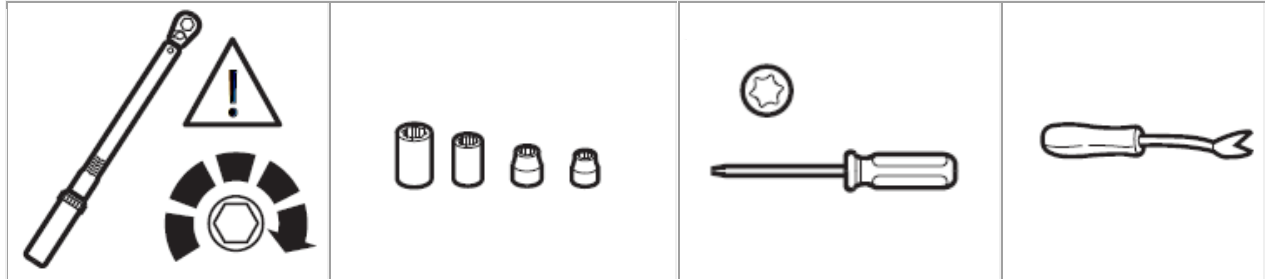
35mm

49mm

Ford Factory Shop Manual purchase options www.motorcraftservice.com

NO PART OF THIS DOCUMENT MAY BE REPRODUCED WITHOUT PRIOR AGREEMENT AND WRITTEN PERMISSION OF FORD PERFORMANCE PARTS © Ford Motor Company 2020

Special Tool(s) / General Equipment

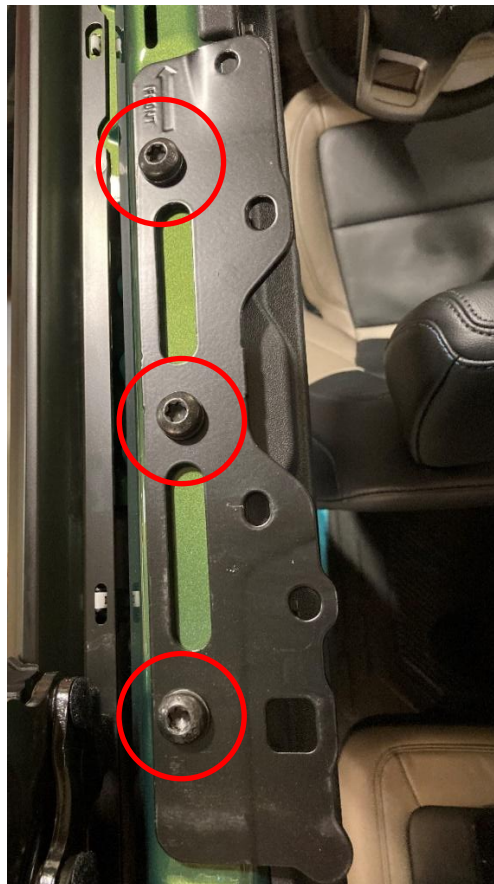


B-Bow Brace Removal

NOTE: For ease of removal and installation, remove all hardtop roof panels or fully retract softtop roof.

1. Above the B-pillar, remove the 3 bolts and remove the brackets.

(Left side shown, Right side similar.)

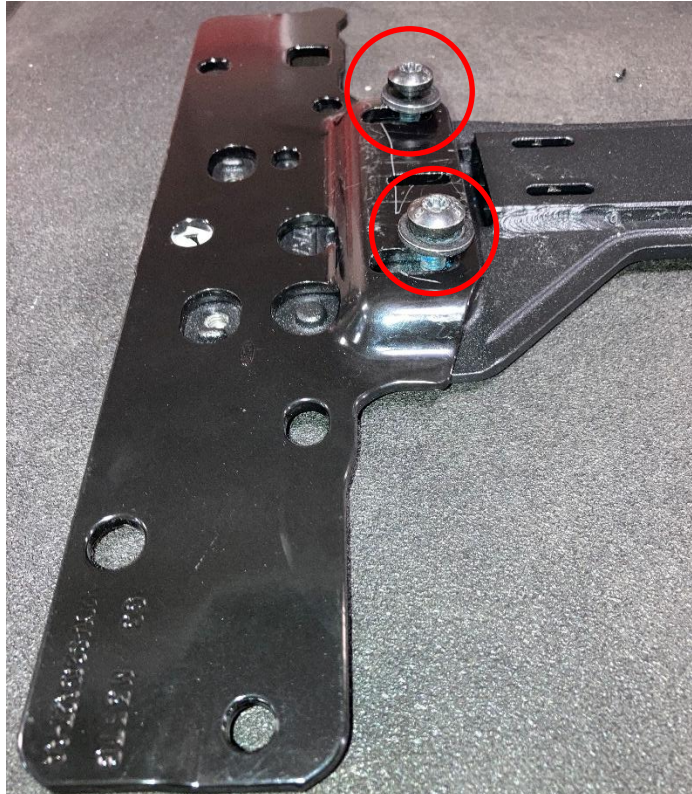


Ford Factory Shop Manual purchase options www.motorcraftservice.com

NO PART OF THIS DOCUMENT MAY BE REPRODUCED WITHOUT PRIOR AGREEMENT AND WRITTEN PERMISSION OF FORD PERFORMANCE PARTS © Ford Motor Company 2020

B-Bow Brace Installation

1. Install the B-bow brace brackets to the underside of the B-bow brace using the bolts and washers (M8x21), as shown in the image.
Torque: 20 ft-lbs (27.5 Nm)
(Left side shown, Right side similar.)



Ford Factory Shop Manual purchase options www.motorcraftservice.com

NO PART OF THIS DOCUMENT MAY BE REPRODUCED WITHOUT PRIOR AGREEMENT AND WRITTEN PERMISSION OF
FORD PERFORMANCE PARTS © Ford Motor Company 2020

2. Install the center trim piece to the B-bow brace. Make sure there are 6 clip slots on both sides before installing. Press firmly to secure the clips into the slots.

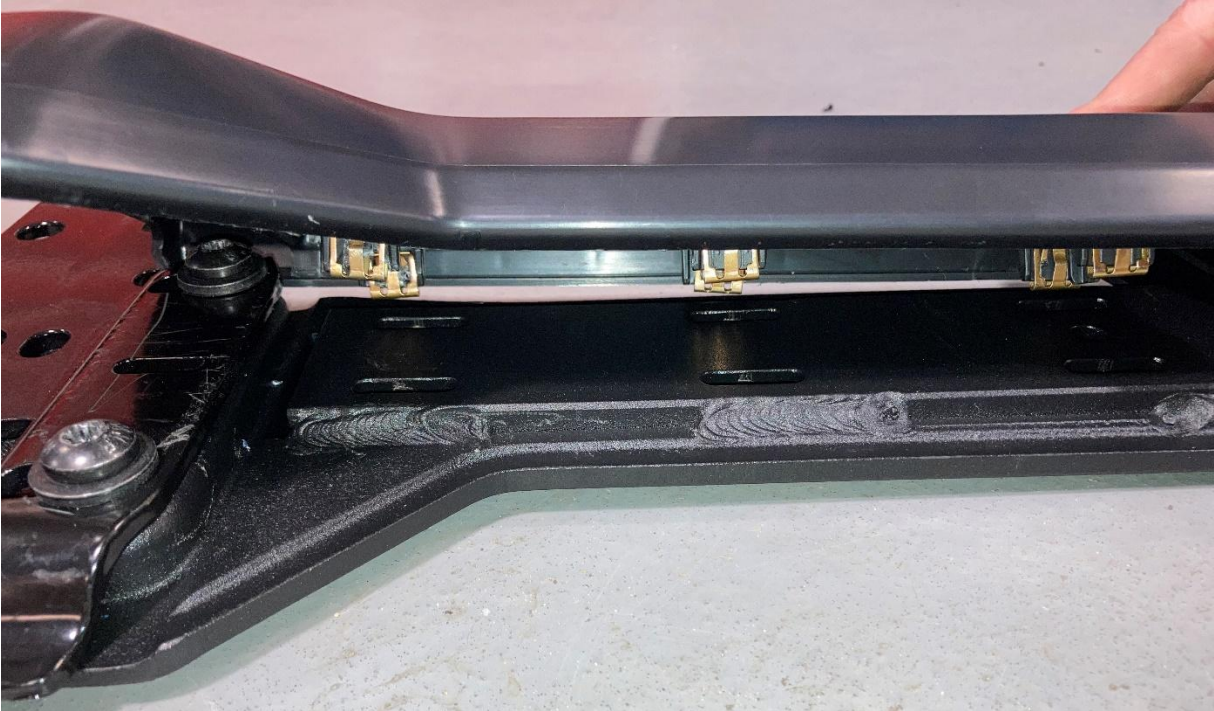


Ford Factory Shop Manual purchase options www.motorcraftservice.com

NO PART OF THIS DOCUMENT MAY BE REPRODUCED WITHOUT PRIOR AGREEMENT AND WRITTEN PERMISSION OF FORD PERFORMANCE PARTS © Ford Motor Company 2020

3. Install the left and right side trim pieces to the B-bow brace. Press firmly to secure the clips into the slots.

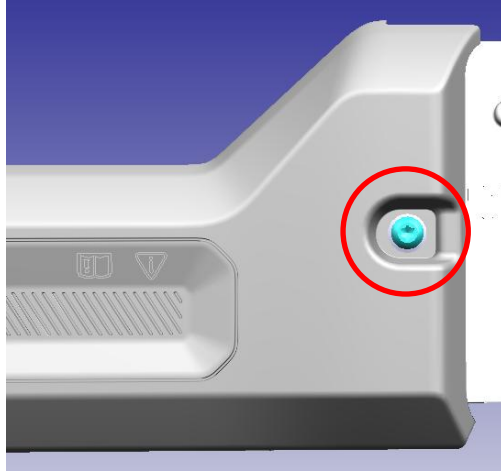
(Left side shown, Right side similar.)



Ford Factory Shop Manual purchase options www.motorcraftservice.com

NO PART OF THIS DOCUMENT MAY BE REPRODUCED WITHOUT PRIOR AGREEMENT AND WRITTEN PERMISSION OF FORD PERFORMANCE PARTS © Ford Motor Company 2020

4. Secure the left and right side trim pieces using 2 bolts&washers (M6x25).
(Left side shown, Right side similar.)

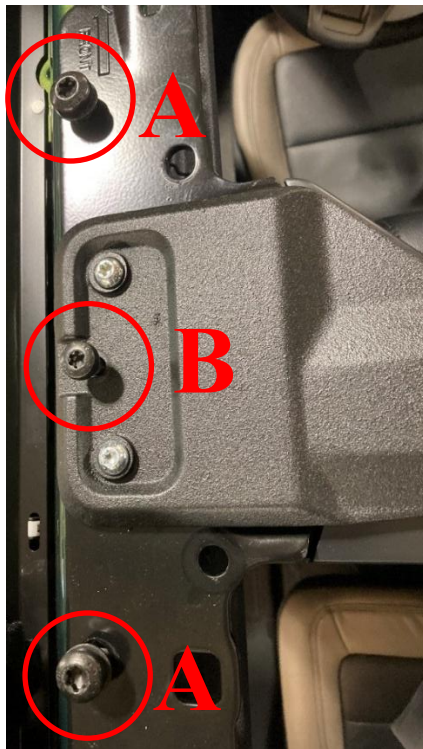


5. Install the B-bow brace above the B-pillar by securing the brackets to the frame using 2 bolts&washers (M8x33) and 1 bolt (M8x35), as shown in the image. Verify that the arrow on top of the bracket is pointing towards the front of the vehicle.

A: Torque: 15 ft-lbs (20 Nm)

B: Torque: 20 ft-lbs (27.5 Nm)

(Left side shown, Right side similar.)



Ford Factory Shop Manual purchase options www.motorcraftservice.com

NO PART OF THIS DOCUMENT MAY BE REPRODUCED WITHOUT PRIOR AGREEMENT AND WRITTEN PERMISSION OF FORD PERFORMANCE PARTS © Ford Motor Company 2020

C-Bow Brace Removal

1. Use a plastic trim removal tool to remove the plastic rivet and middle rear header trim piece. Disconnect the electrical connector for the overhead light.



2. Disconnect the electrical connector for one side of the curtain airbag.
(This step is necessary for ease of installing the C-Bow Brace bracket.)



Ford Factory Shop Manual purchase options www.motorcraftservice.com

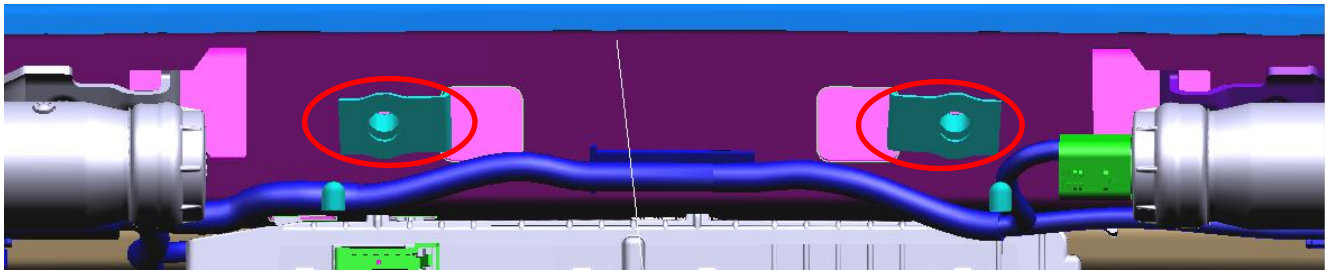
NO PART OF THIS DOCUMENT MAY BE REPRODUCED WITHOUT PRIOR AGREEMENT AND WRITTEN PERMISSION OF FORD PERFORMANCE PARTS © Ford Motor Company 2020

C-Bow Brace Installation

1. Install the C-bow brace bracket to the backside of the C-bow brace using the bolts and washers (M8x49), as shown in the image.
Torque: 18 ft-lbs (25 Nm)



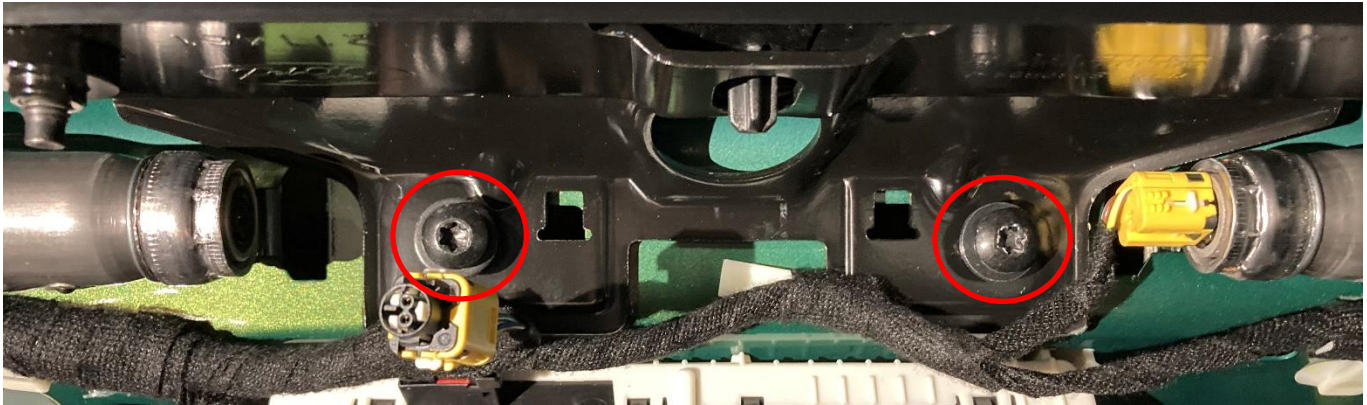
2. Install the J-clips (M8) on the rear header, as shown in the image.



NO PART OF THIS DOCUMENT MAY BE REPRODUCED WITHOUT PRIOR AGREEMENT AND WRITTEN PERMISSION OF FORD PERFORMANCE PARTS © Ford Motor Company 2020

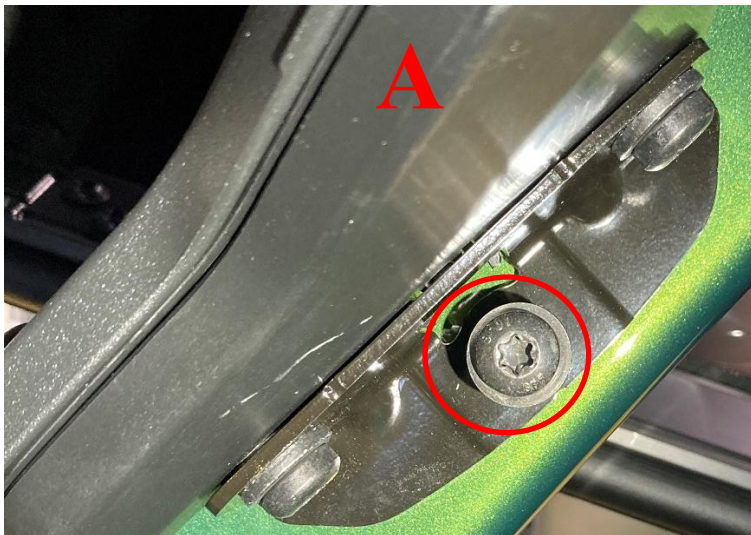
3. Install the C-bow brace to the rear header using the bolts and washers (M8x24), as shown in the image.
Torque: 18 ft-lbs (25 Nm)

 **Reconnect the electrical connector to the curtain airbag.**



4. Install the C-bow brace to the side pillars using the bolts and washers (M8x30).
A: Torque: 11 ft-lbs (15 Nm)
B: Torque: 18 ft-lbs (25 Nm)

(Left side shown, Right side similar.)



Ford Factory Shop Manual purchase options www.motorcraftservice.com

NO PART OF THIS DOCUMENT MAY BE REPRODUCED WITHOUT PRIOR AGREEMENT AND WRITTEN PERMISSION OF
FORD PERFORMANCE PARTS © Ford Motor Company 2020

5. Install the C-bow brace trim piece to the rear header.

