



M-15200K-FSA
F-SERIES A-PILLAR OFF-ROAD LIGHT KIT
F-150 2021➡ Super Duty 2017➡

NO PART OF THIS DOCUMENT MAY BE REPRODUCED WITHOUT PRIOR AGREEMENT AND WRITTEN PERMISSION OF
FORD PERFORMANCE PARTS © Ford Motor Company 2025

PRIOR TO INSTALLATION READ THESE INSTRUCTION COMPETELY
For questions, Call the FORD PERFORMANCE Techline 1-800-367-3788

Please visit <https://www.performanceparts.ford.com> for warranty information

NOTE: Lens Covers are required while operating on public roads. Both United States Federal Regulation FMVSS108 and Canadian Motor Vehicle Regulation 4.25 despite section 4.04 (2) (c) require a vehicle equipped with off-road lamps when on a highway must have the off-road lamps concealed with opaque covers.

Kit contents:

Lamp Kit	D-SS Spot Light Assembly	2
	FPP Lens Cover	2
Harness Kit	Pod harness with Switch	1
Hardware Kit	LH Vehicle Mount Bracket	1
	RH Vehicle Mount Bracket	1
	D-SS Pod Bracket	2
	M6 x 22 Socket Head	4
	M6 Lock Nut	4
	5/16 Flat Washer	2
	5/16 Lock Washer	2
	5/16 Carriage Bolt	2
	5/16 Hex Nut	2

Tools/Equipment required:

- 10 Tie wraps
- Piercing tool
- Ratchet
- 10mm socket
- 11mm socket
- Wire cutters
- Drill
- Step drill bit or 3/4" (19mm) drill bit
- Torque wrench

Ford Factory Shop Manual purchase options www.motorcraftservice.com

NO PART OF THIS DOCUMENT MAY BE REPRODUCED WITHOUT PRIOR AGREEMENT AND WRITTEN PERMISSION OF
FORD PERFORMANCE PARTS © Ford Motor Company 2025

INSTALLATION

NOTE: F-150 SHOWN. SUPER DUTY SIMILAR.

1. On one side of the vehicle, peel up the edge of the cowl panel grille then remove the bolt using a 10mm socket.



2. Position the vehicle mount bracket in place and reinstall the bolt, do not tighten yet.



Ford Factory Shop Manual purchase options www.motorcraftservice.com

NO PART OF THIS DOCUMENT MAY BE REPRODUCED WITHOUT PRIOR AGREEMENT AND WRITTEN PERMISSION OF
FORD PERFORMANCE PARTS © Ford Motor Company 2025

NOTE: Allow 2-3mm of space between the bracket and the fender to prevent paint damage.

3. When fit is confirmed, re-tighten the bolt and torque to 9 Nm (6.6 lbs-ft.)
4. Repeat steps 1-3 for the other side of the vehicle.
5. Install the brackets to the spotlight assemblies in THIS orientation ONLY.



6. Secure each bracket to each spotlight assembly with two M6 x 22 socket head bolts and M6 lock nuts. Tighten slightly to allow light positioning after installation.

NO PART OF THIS DOCUMENT MAY BE REPRODUCED WITHOUT PRIOR AGREEMENT AND WRITTEN PERMISSION OF
FORD PERFORMANCE PARTS © Ford Motor Company 2025

7. Install the spotlight assemblies to the vehicle mount brackets using the remaining components in the hardware kit.



8. Open the Hood.

9. Route the harness from the spotlight under the cowl and into the engine compartment on both sides.



NO PART OF THIS DOCUMENT MAY BE REPRODUCED WITHOUT PRIOR AGREEMENT AND WRITTEN PERMISSION OF
FORD PERFORMANCE PARTS © Ford Motor Company 2025

10. Layout the wire harness along the cowl such that the portion for each spotlight is equal length on both sides.
11. Loosely secure wire harness to cowl snap features using tie wraps as shown. Lay the connectors to each spotlight and the battery connections towards the battery.

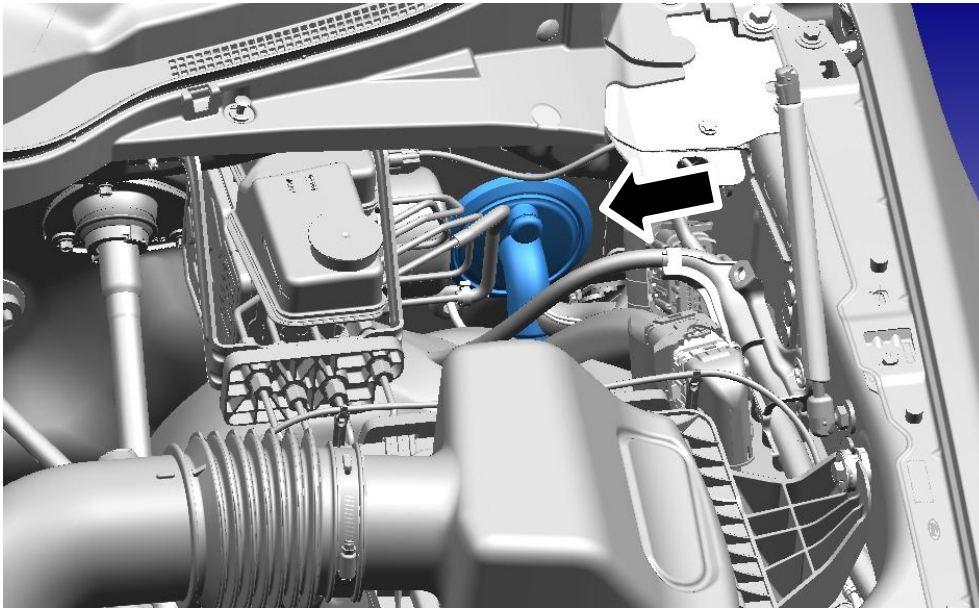


12. Route the spotlight connection cable as shown.

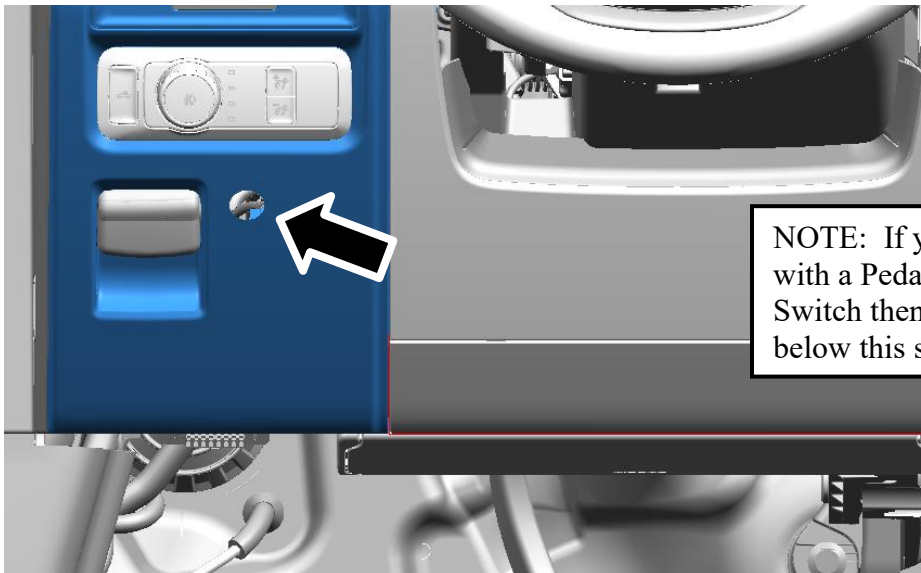


NO PART OF THIS DOCUMENT MAY BE REPRODUCED WITHOUT PRIOR AGREEMENT AND WRITTEN PERMISSION OF
 FORD PERFORMANCE PARTS © Ford Motor Company 2025

13. Connect the wire harness connector to the spotlight connector on each side.
14. Wrap the 3 switch terminals together with electrical tape.
15. Locate the grommet on the driver's side



16. Using a piercing tool, make a small puncture in the grommet then feed the 3 wires of the harness through the grommet into the interior.
17. Using a step drill bit make a 3/4" (19mm) hole into the trim panel as shown.

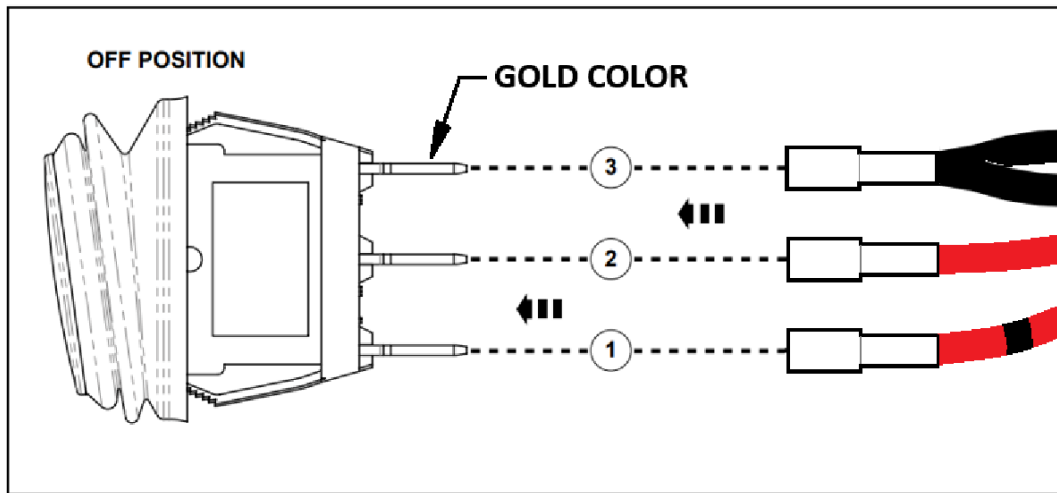


NOTE: If your vehicle is equipped with a Pedal Height Adjustment Switch then drill the hole directly below this switch.

NO PART OF THIS DOCUMENT MAY BE REPRODUCED WITHOUT PRIOR AGREEMENT AND WRITTEN PERMISSION OF
FORD PERFORMANCE PARTS © Ford Motor Company 2025

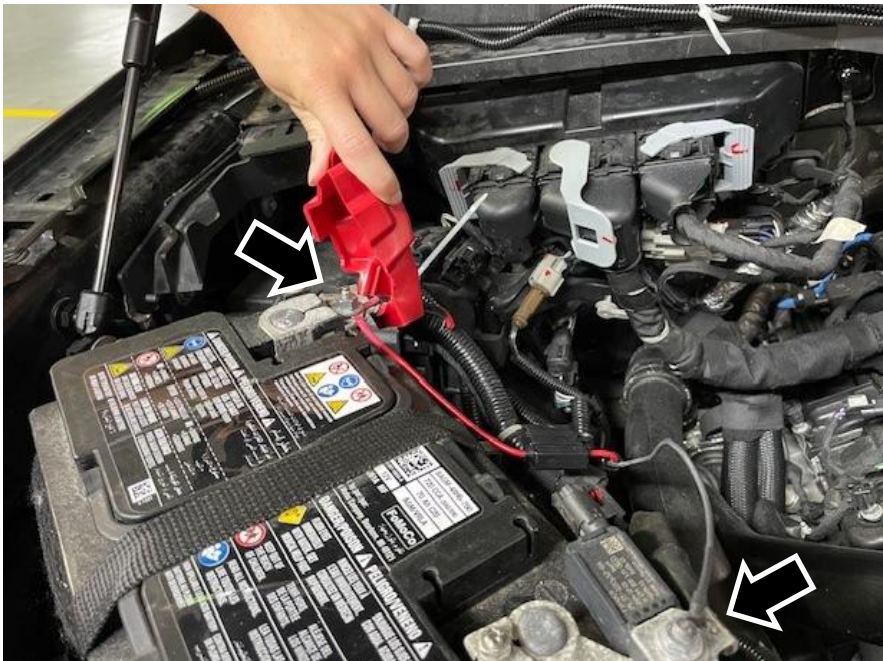
18. Feed the 3 wires through the drilled hole then remove the electrical tape.

19. Secure the 3 terminals of the harness to the switch terminals as shown.



20. Attach the power wire to the +12V battery using an 11mm socket then attach ground wire to battery negative terminal using a 10mm socket as shown.

- Torque: 6.2 N-m (4.6 lbs-ft)





M-15200K-FSA
F-SERIES A-PILLAR OFF-ROAD LIGHT KIT
F-150 2021➡ Super Duty 2017➡

NO PART OF THIS DOCUMENT MAY BE REPRODUCED WITHOUT PRIOR AGREEMENT AND WRITTEN PERMISSION OF
FORD PERFORMANCE PARTS © Ford Motor Company 2025

21. Secure the rocker switch into the hole.

22. Verify the following:

- Both spotlights illuminate when rocker switch is pressed.
- Rocker switch illuminates when rocker switch spotlights are on.
- Rocker switch should NOT illuminate when spotlights are off.

23. Secure the harness to area above pedals using a tie wrap.

24. Secure any excess wire harness under hood.

25. Fully tighten all tie wraps and trim excess using wire cutters.

26. Verify that all fasteners securely tightened.