



# 2012 Mustang Boss 302 Laguna Seca Edition Transmission Cooling Scoop M-5025-MBR INSTALLATION INSTRUCTIONS

NO PART OF THIS DOCUMENT MAY BE REPRODUCED WITHOUT PRIOR AGREEMENT AND WRITTEN PERMISSION OF FORD RACING PERFORMANCE PARTS

**!!! PLEASE READ THE FOLLOWING INSTRUCTIONS CAREFULLY PRIOR TO INSTALLATION !!!**

**Caution: If you are not confident that you can complete the installation safely, have it completed by a certified technician! Failure to complete the installation correctly could cause damage to your vehicle.**



### PARTS IN KIT:

Quantity	Part Name
1	Transmission Cooling Scoop

**Techline (800) FORD788**

Factory Ford shop manuals are available from Helm Publications, 1-800-782-4356



## 2012 Mustang Boss 302 Laguna Seca Edition Transmission Cooling Scoop M-5025-MBR INSTALLATION INSTRUCTIONS

NO PART OF THIS DOCUMENT MAY BE REPRODUCED WITHOUT PRIOR AGREEMENT AND WRITTEN PERMISSION OF FORD RACING PERFORMANCE PARTS

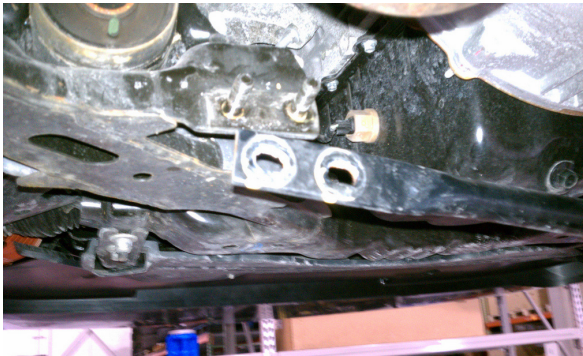
### **INSTALLATION INSTRUCTIONS:**

**STEP 1:** Support the vehicle to gain access to the undercarriage.

**STEP 2:** Remove the (4) nuts attaching the rear support brace to the sub frame.



**STEP 3:** Remove the rear support brace from the sub frame studs.

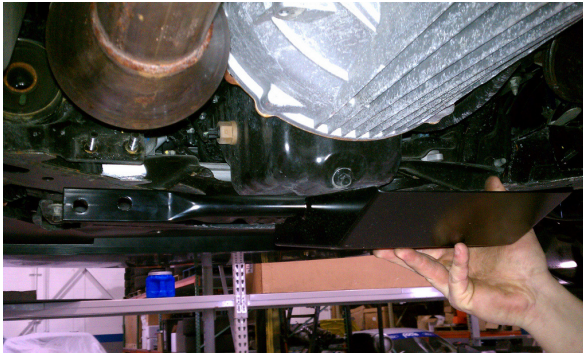


**Techline (800) FORD788**

Factory Ford shop manuals are available from Helm Publications, 1-800-782-4356

NO PART OF THIS DOCUMENT MAY BE REPRODUCED WITHOUT PRIOR AGREEMENT AND WRITTEN PERMISSION OF FORD RACING PERFORMANCE PARTS

**STEP 4:** Install the new rear support brace / transmission duct over sub frame studs.



**STEP 5:** Install the (4) nuts onto the sub frame studs and tighten.



**STEP 6:** Torque (4) nuts to 46 ft.-lb.



**Techline (800) FORD788**

Factory Ford shop manuals are available from Helm Publications, 1-800-782-4356