



**2010-12 Mustang GT Splitter Bracket Kit
M-17A626-MB
INSTALLATION INSTRUCTIONS**

NO PART OF THIS DOCUMENT MAY BE REPRODUCED WITHOUT PRIOR AGREEMENT AND WRITTEN PERMISSION OF FORD RACING PERFORMANCE PARTS

!!! PLEASE READ THE FOLLOWING INSTRUCTIONS CAREFULLY PRIOR TO INSTALLATION !!!

Caution: If you are not confident that you can complete the installation safely, have it completed by a certified technician! Failure to complete the installation correctly could cause damage to your vehicle.

The following instructions apply to a 2010/12 Mustang with VP / California Special lower grill insert. If vehicle is not equipped with this lower grill insert the part is available from Ford Motor Company dealerships Part Number CR3Z-17626-AB.

The Mustang GT Splitter Bracket Kit M-17A626-MB is intended to be used in conjunction with the Mustang Boss Laguna Seca Edition Splitter part number M-16601P-MB which is referenced in the following instruction set for clarity.

Techline (800) FORD788

Factory Ford shop manuals are available from Helm Publications, 1-800-782-4356



2010-12 Mustang GT Splitter Bracket Kit M-17A626-MB INSTALLATION INSTRUCTIONS

NO PART OF THIS DOCUMENT MAY BE REPRODUCED WITHOUT PRIOR AGREEMENT AND WRITTEN PERMISSION OF FORD RACING PERFORMANCE PARTS



PARTS IN KIT:

Quantity	Part Name
1	Splitter Bumper Bracket
2	Bumper Bolt
4	Nut
16	J-Nut

PARTS PROVIDED IN SPLITTER KIT M-16601P-MB:

Quantity	Part Name
1	Splitter
2	Splitter support rod assembly
20	M8 X 25mm bolt
4	J-Nut

Techline (800) FORD788

Factory Ford shop manuals are available from Helm Publications, 1-800-782-4356



2010-12 Mustang GT Splitter Bracket Kit M-17A626-MB INSTALLATION INSTRUCTIONS

NO PART OF THIS DOCUMENT MAY BE REPRODUCED WITHOUT PRIOR AGREEMENT AND WRITTEN PERMISSION OF FORD RACING PERFORMANCE PARTS

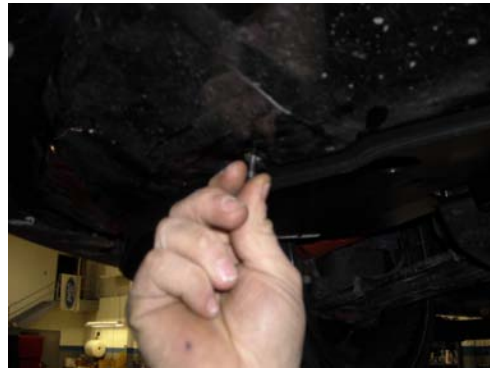
INSTALLATION INSTRUCTIONS:

STEP 1: Support the vehicle to gain access to the under carriage.

STEP 2: Remove the front wheels.



STEP 3: Remove the (2) outer and (4) center bolts holding the splash guard to the fascia.



Techline (800) FORD788

Factory Ford shop manuals are available from Helm Publications, 1-800-782-4356

2010-12 Mustang GT Splitter Bracket Kit M-17A626-MB INSTALLATION INSTRUCTIONS

NO PART OF THIS DOCUMENT MAY BE REPRODUCED WITHOUT PRIOR AGREEMENT AND WRITTEN PERMISSION OF FORD RACING PERFORMANCE PARTS

STEP 4: Remove (2) front side inner fender liner bolts per side.



STEP 5: Remove (2) upper fascia bolts and (4) grill retaining clips.



STEP 6: Unclip the ambient air temperature sensor in the lower grille from fascia.



Techline (800) FORD788

Factory Ford shop manuals are available from Helm Publications, 1-800-782-4356

2010-12 Mustang GT Splitter Bracket Kit M-17A626-MB INSTALLATION INSTRUCTIONS

NO PART OF THIS DOCUMENT MAY BE REPRODUCED WITHOUT PRIOR AGREEMENT AND WRITTEN PERMISSION OF FORD RACING PERFORMANCE PARTS

STEP 7: Unclip both drivers and passenger sides of fascia and slightly pull away from vehicle.



STEP 8: Disconnect both running lamp and fog light electrical connectors.



STEP 9: Remove the front fascia from the vehicle by sliding forward.



Techline (800) FORD788

Factory Ford shop manuals are available from Helm Publications, 1-800-782-4356

2010-12 Mustang GT Splitter Bracket Kit M-17A626-MB INSTALLATION INSTRUCTIONS

NO PART OF THIS DOCUMENT MAY BE REPRODUCED WITHOUT PRIOR AGREEMENT AND WRITTEN PERMISSION OF FORD RACING PERFORMANCE PARTS

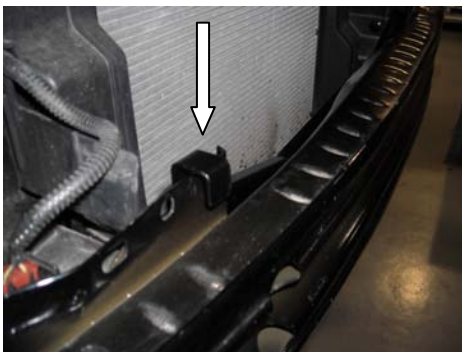
STEP 10: Remove bumper foam retaining clips and bumper foam.



STEP 11: Remove the (2) upper bumper bolts.



STEP 12: Install the new splitter bracket over bumper and slide onto lower (2) bumper bolts.



Techline (800) FORD788

Factory Ford shop manuals are available from Helm Publications, 1-800-782-4356

2010-12 Mustang GT Splitter Bracket Kit M-17A626-MB INSTALLATION INSTRUCTIONS

NO PART OF THIS DOCUMENT MAY BE REPRODUCED WITHOUT PRIOR AGREEMENT AND WRITTEN PERMISSION OF FORD RACING PERFORMANCE PARTS

STEP 13: Install the (2) supplied longer upper bumper bolts and torque to 18 ft.-lb.



STEP 14: Install (4) nuts on rear side of bumper bolts and tighten down onto the splitter bracket to 18 ft.-lb.



STEP 15: Reinstall the bumper foam.



Techline (800) FORD788

Factory Ford shop manuals are available from Helm Publications, 1-800-782-4356

NO PART OF THIS DOCUMENT MAY BE REPRODUCED WITHOUT PRIOR AGREEMENT AND WRITTEN PERMISSION OF FORD RACING PERFORMANCE PARTS

STEP 16: Remove (1) bolt and (1) retaining clip each side on the lower grill insert.



STEP 17: Gently unclip lower grill insert from fascia and remove by sliding forward.



STEP 18: Place templates on top side of lower grill insert and transfer hole locations.



Techline (800) FORD788

Factory Ford shop manuals are available from Helm Publications, 1-800-782-4356

2010-12 Mustang GT Splitter Bracket Kit M-17A626-MB INSTALLATION INSTRUCTIONS

NO PART OF THIS DOCUMENT MAY BE REPRODUCED WITHOUT PRIOR AGREEMENT AND WRITTEN PERMISSION OF FORD RACING PERFORMANCE PARTS

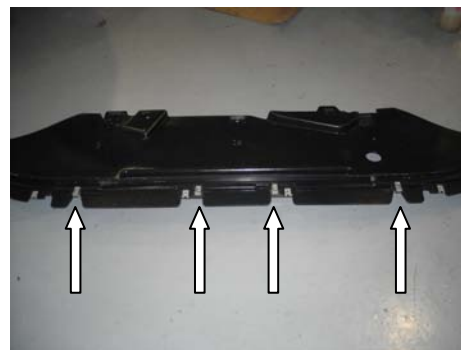
STEP 19: Drill (2) 1.00" holes at the marked locations from the top side down and de-bur the holes.



STEP 20: Remove the (4) bottom clips on the leading forward edge of the splash guard.



STEP 21: Replace the removed clips with the (4) J-Nuts provided in Splitter Kit M-16601P-MB.



Techline (800) FORD788

Factory Ford shop manuals are available from Helm Publications, 1-800-782-4356

2010-12 Mustang GT Splitter Bracket Kit M-17A626-MB INSTALLATION INSTRUCTIONS

NO PART OF THIS DOCUMENT MAY BE REPRODUCED WITHOUT PRIOR AGREEMENT AND WRITTEN PERMISSION OF FORD RACING PERFORMANCE PARTS

STEP 22: Reference steps 5-9 and reinstall the front fascia onto vehicle.



STEP 23: Slide the lower grill insert into fascia and clip into place.



STEP 24: Reference steps 3, 4 and 16 to reattach the lower grill insert hardware and inner fender liners.

Techline (800) FORD788

Factory Ford shop manuals are available from Helm Publications, 1-800-782-4356

NO PART OF THIS DOCUMENT MAY BE REPRODUCED WITHOUT PRIOR AGREEMENT AND WRITTEN PERMISSION OF FORD RACING PERFORMANCE PARTS

STEP 25: Clip the ambient air temp into the lower grill insert.



STEP 26: The lower grill insert has (8) locations on leading edge for additional clips as highlighted below.



STEP 27: Slide the provided J-Nuts onto the (8) locations and transfer the locations for the new holes.



Techline (800) FORD788

Factory Ford shop manuals are available from Helm Publications, 1-800-782-4356



2010-12 Mustang GT Splitter Bracket Kit M-17A626-MB INSTALLATION INSTRUCTIONS

NO PART OF THIS DOCUMENT MAY BE REPRODUCED WITHOUT PRIOR AGREEMENT AND WRITTEN PERMISSION OF FORD RACING PERFORMANCE PARTS

STEP 28: Remove the J-Nuts and drill a 3/8" diameter hole in the (8) locations.



STEP 29: Install (8) J-Nuts in the newly created locations.

STEP 30: Test fit the Splitter Kit M-16601P-MB on the vehicle by installing the (8) bolts on leading edge and (4) bolts on trailing edge.



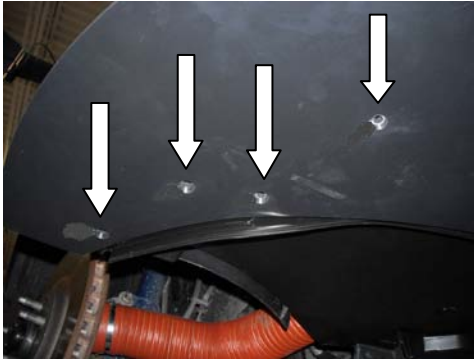
Techline (800) FORD788

Factory Ford shop manuals are available from Helm Publications, 1-800-782-4356

2010-12 Mustang GT Splitter Bracket Kit M-17A626-MB INSTALLATION INSTRUCTIONS

NO PART OF THIS DOCUMENT MAY BE REPRODUCED WITHOUT PRIOR AGREEMENT AND WRITTEN PERMISSION OF FORD RACING PERFORMANCE PARTS

STEP 31: With Splitter Kit M-16601P-MB in place, transfer the remaining (8) holes through the splitter onto grill insert.



STEP 32: Remove the splitter and drill the (8) remaining holes 3/8" diameter through the lower grill insert.



STEP 33: Install the (8) remaining J-Nuts in the new locations.



Techline (800) FORD788

Factory Ford shop manuals are available from Helm Publications, 1-800-782-4356

2010-12 Mustang GT Splitter Bracket Kit M-17A626-MB INSTALLATION INSTRUCTIONS

NO PART OF THIS DOCUMENT MAY BE REPRODUCED WITHOUT PRIOR AGREEMENT AND WRITTEN PERMISSION OF FORD RACING PERFORMANCE PARTS

STEP 34: Install Splitter Kit M-16601P-MB by loosely installing the splitter with the provided (20) fasteners; torque each fastener to 28 in.-lb. beginning with center-most fastener and working outward on both sides.



STEP 35: Install the upper splitter rod end through the lower grill insert and thread into bumper bracket.



STEP 36: Install the splitter support rods onto rod ends; torque bolts through splitter to 28 in.-lb.



Techline (800) FORD788

Factory Ford shop manuals are available from Helm Publications, 1-800-782-4356



2010-12 Mustang GT Splitter Bracket Kit M-17A626-MB INSTALLATION INSTRUCTIONS

NO PART OF THIS DOCUMENT MAY BE REPRODUCED WITHOUT PRIOR AGREEMENT AND WRITTEN PERMISSION OF FORD RACING PERFORMANCE PARTS

STEP 37: Lower vehicle back to ground. With vehicle at factory ride height, adjust the splitter support rods so the splitter is level and tighten jam nuts.



STEP 38: Install the front wheels and torque to 98 ft.-lb.



Techline (800) FORD788

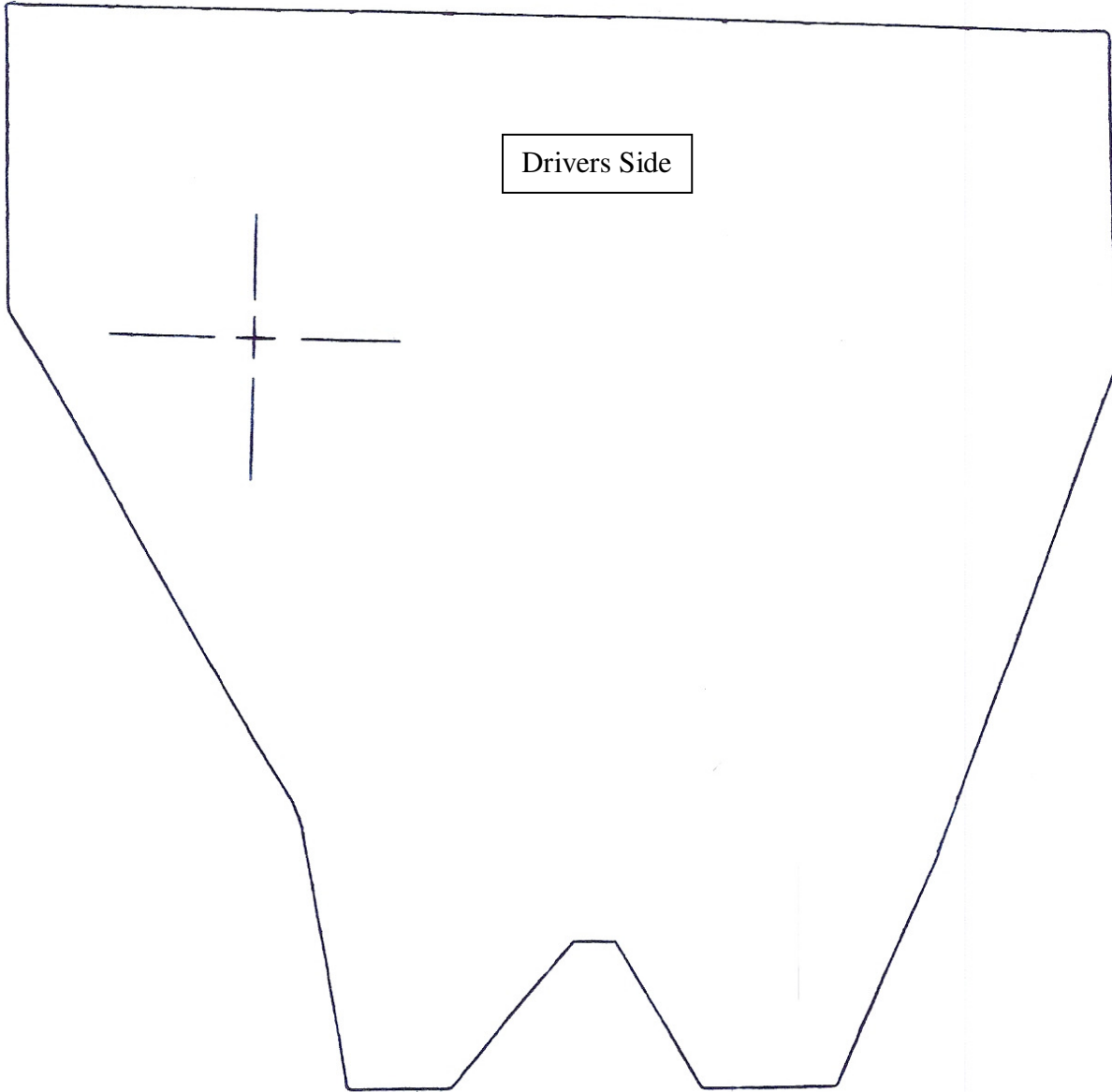
Factory Ford shop manuals are available from Helm Publications, 1-800-782-4356



**2010-12 Mustang GT Splitter Bracket Kit
M-17A626-MB
INSTALLATION INSTRUCTIONS**

NO PART OF THIS DOCUMENT MAY BE REPRODUCED WITHOUT PRIOR AGREEMENT AND WRITTEN PERMISSION OF FORD RACING PERFORMANCE PARTS

NOTE: Flip template over to use on passenger side of vehicle.



Techline (800) FORD788

Factory Ford shop manuals are available from Helm Publications, 1-800-782-4356