

mountune®



▶ 2363-IC-AA / BA

FOCUS ST INTERCOOLER

Tools required:

Screwdriver / trim tool, torx set, socket set, allen keys

INSTALLATION INSTRUCTIONS



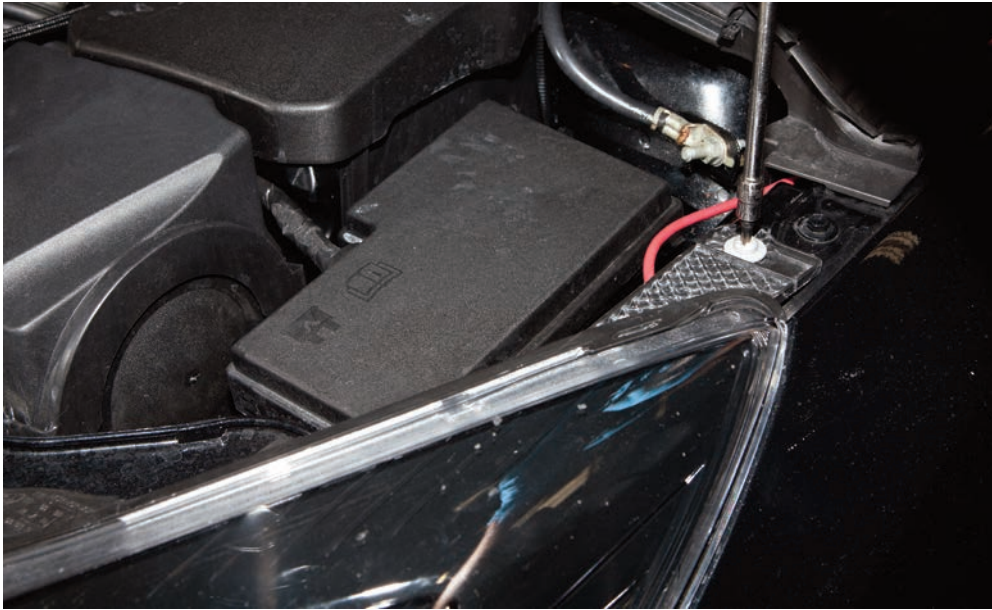
STEP 1: With the bonnet open, use a trim tool, or similar, remove the top panel fixing screws.



STEP 2: Disconnect the bonnet release cable and then withdraw the top cover



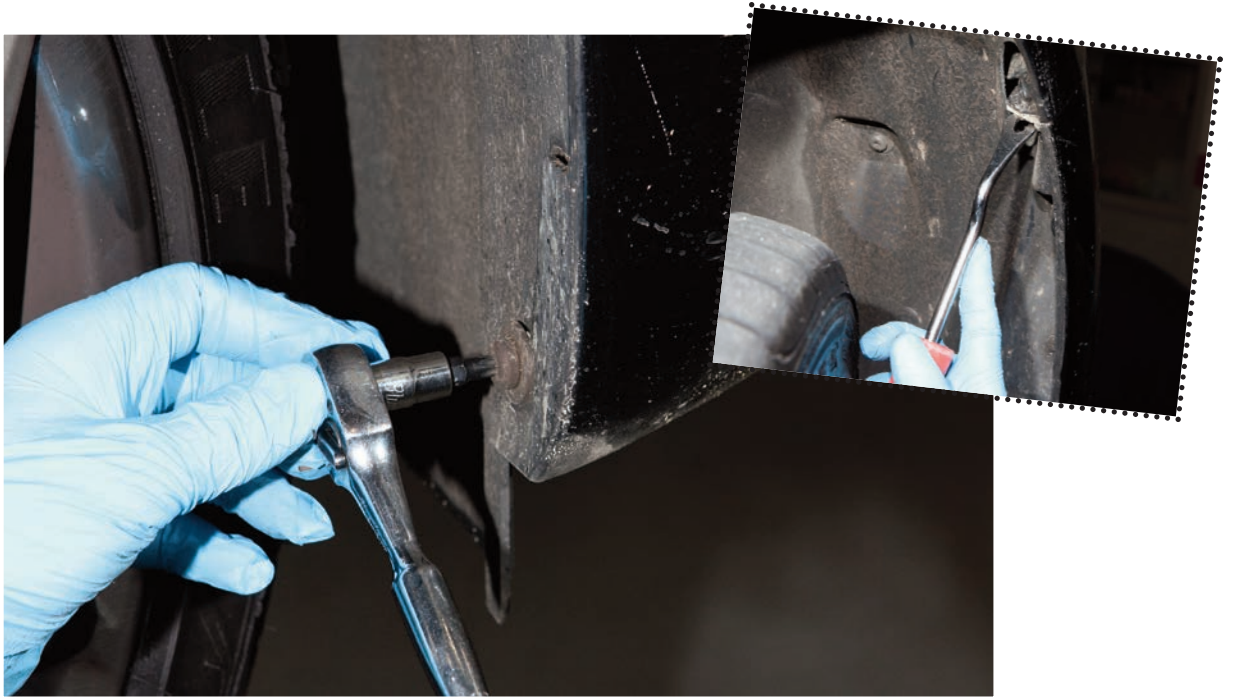
STEP 3: Remove the two headlight locating screws on both headlights



STEP 4: Pull the headlight's upwards to remove it from its mount. You'll need to disconnect the plug as shown



STEP 5: With the car safely raised on a ramp / axle stands undo the offside (UK models) wheel arch liner as shown



STEP 6: A) Undo and remove the lower deflector B) Remove the rear section of the undertray C) Undo and remove the corner deflector as shown



STEP 7: Undo the two bumper bolts (by headlights). Then unclip the front bumper from the wing on both sides



STEP 8: You'll need two people to withdraw the bumper assembly - you'll need to disconnect the fog light (located on RHS) before the bumper can be fully removed



REF: The front of the car should now look similar to the shot below.



STEP 9: Pull the top air duct free from its mounting locators



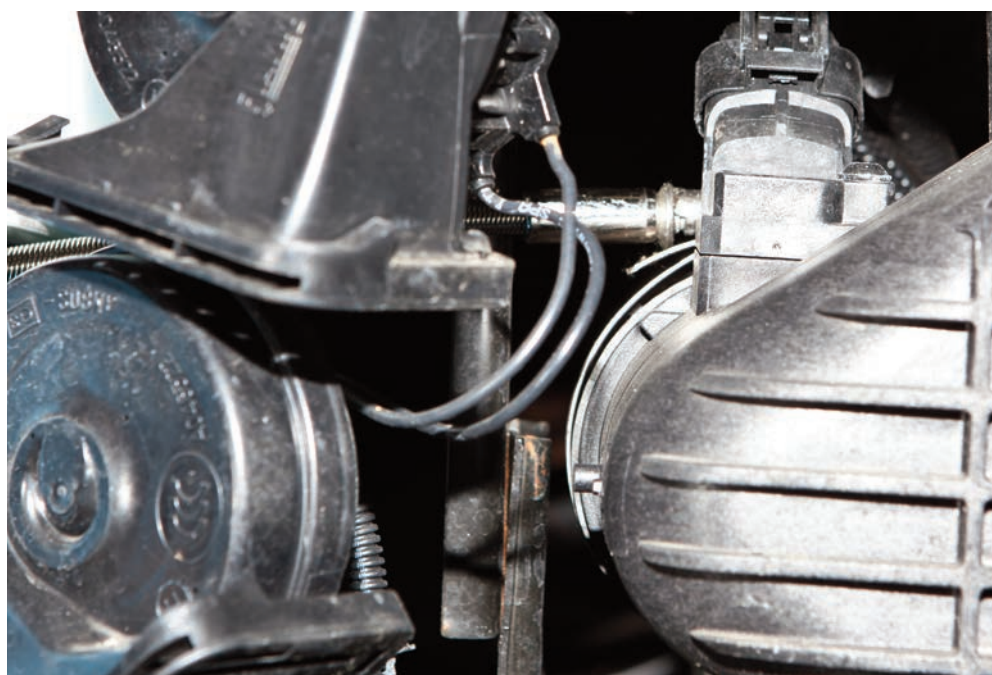
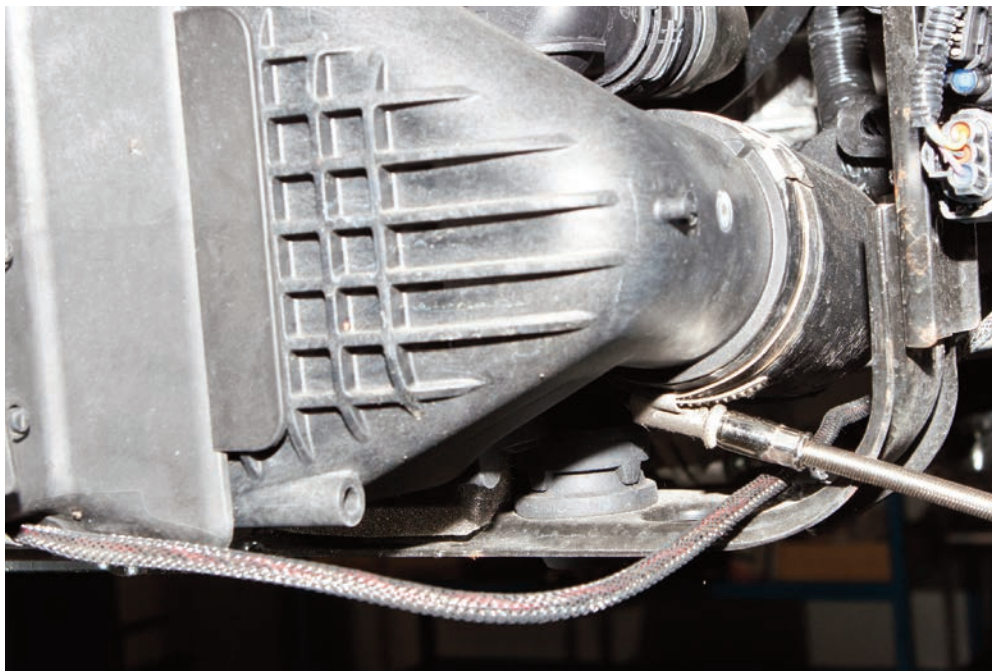
STEP 10: Undo the two torx screws holding the lower air duct (as indicated by the yellow arrows) maneuver free from clips at the bottom and withdraw



STEP 11: You'll now have access to the 'active grill shutter' - this needs to be removed later but at this point push the blades to ensure it's in the fully closed position



STEP 12: Undo the jubilee clips holding the boost pipes on both sides of the intercooler



STEP 13: Unclip the MAP sensor as shown



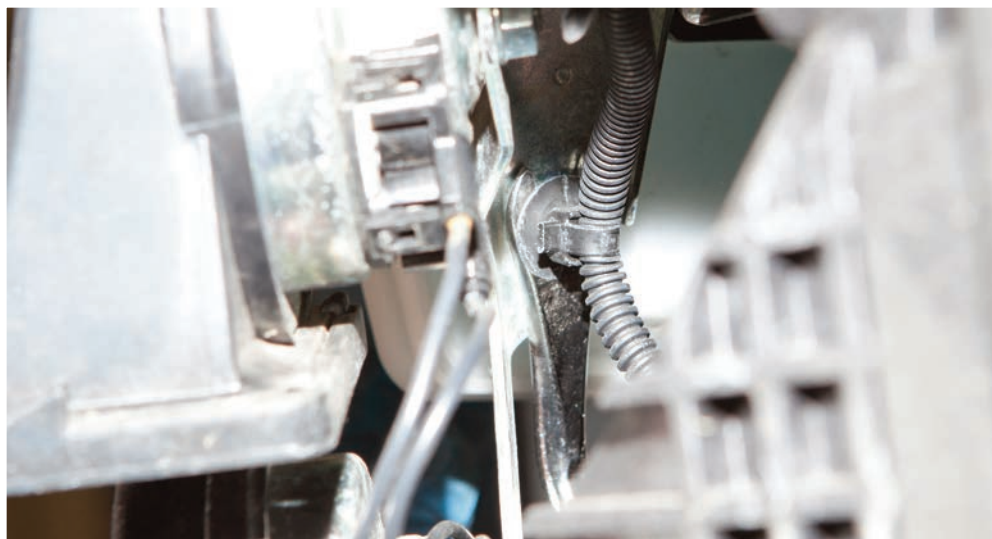
STEP 14: Undo the two intercooler retaining 8mm bolts



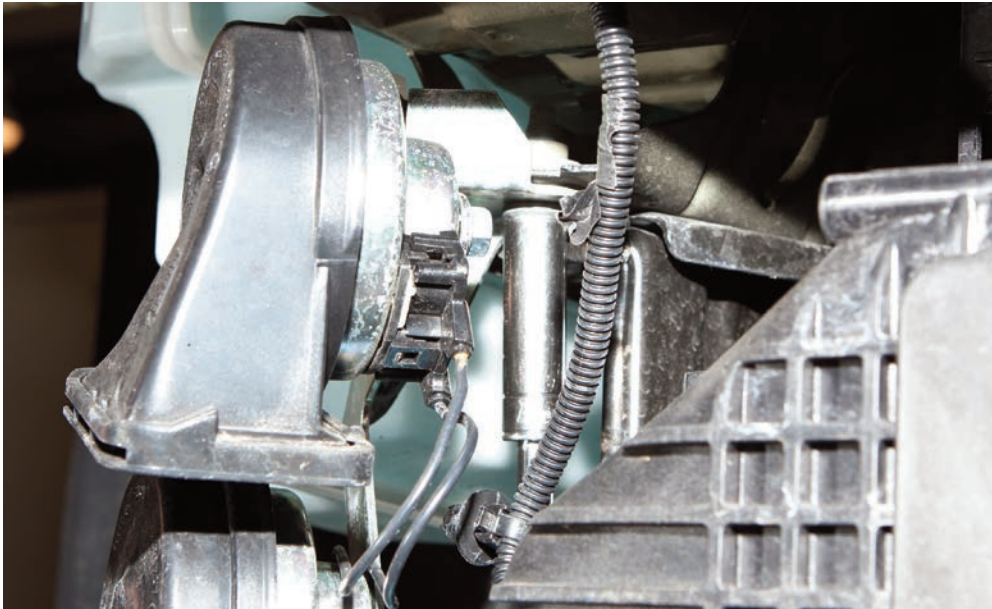
STEP 15: Disconnect the horn plug as shown



STEP 16: Use a trim tool, or similar, to free horn loom mounting clip



STEP 17: Undo the horn bracket mounting bolt and withdraw the horn assembly



STEP 18: Remove the boost pipe hoses from both sides of the intercooler...



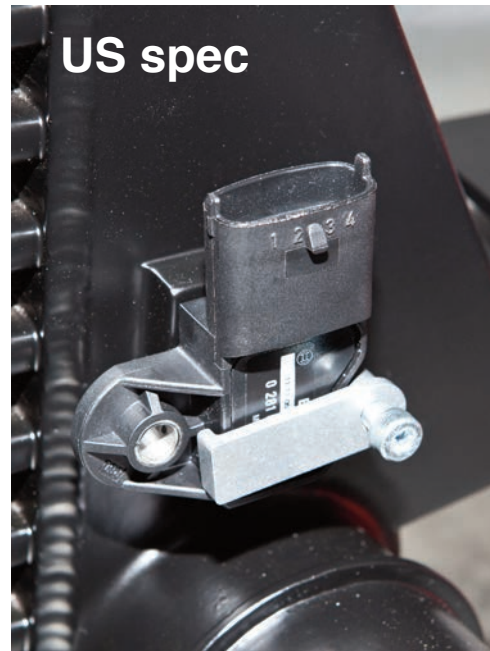
... The intercooler will then be free to be removed



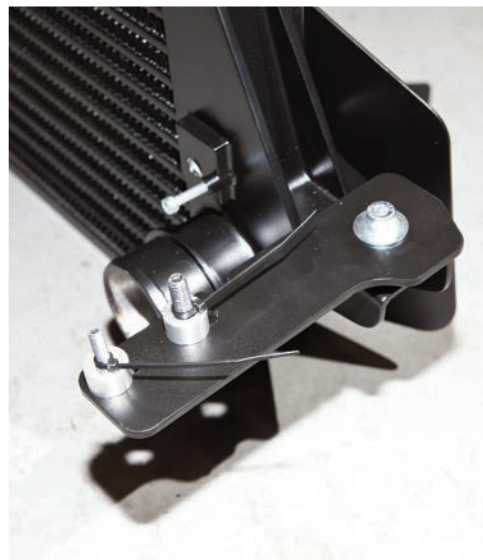
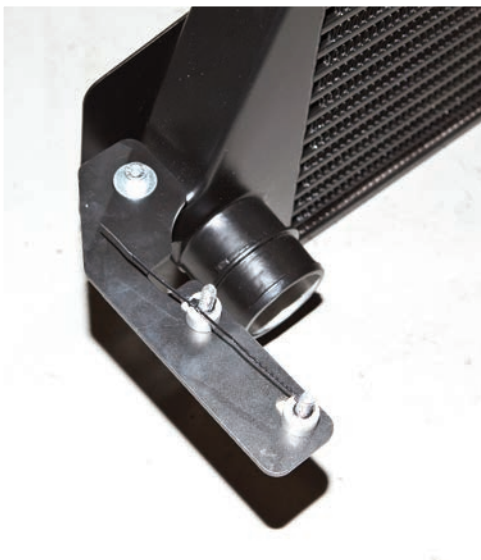
STEP 19: Remove the MAP sensor from the end of the intercooler



STEP 20: Re-fit this to the new intercooler as shown. Note: US intercoolers will require an additional bracket (supplied) to hold the MAP sensor in the correct orientation



REF: Please note the orientation and arrangement of the intercooler mounting brackets



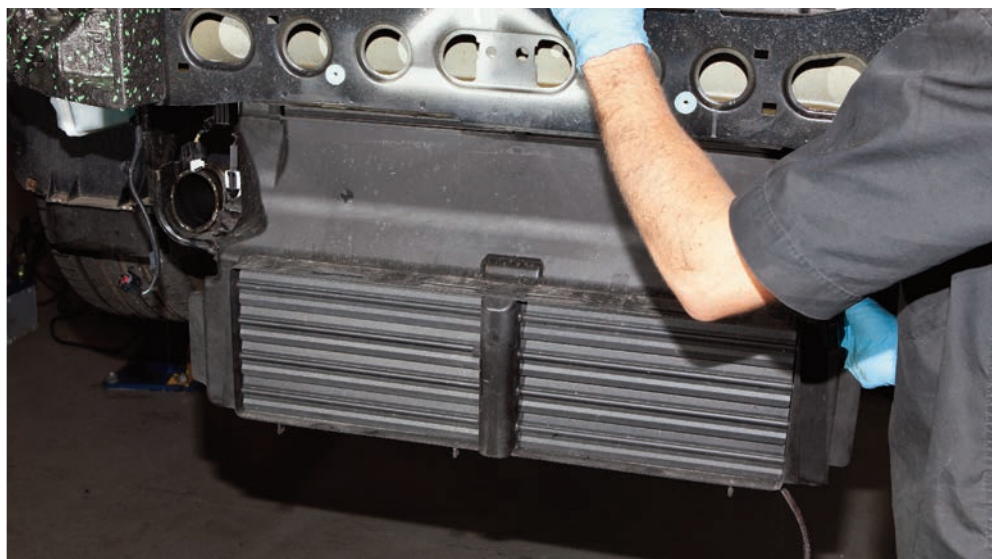
STEP 21: Disconnect the active grill shutter connector shown



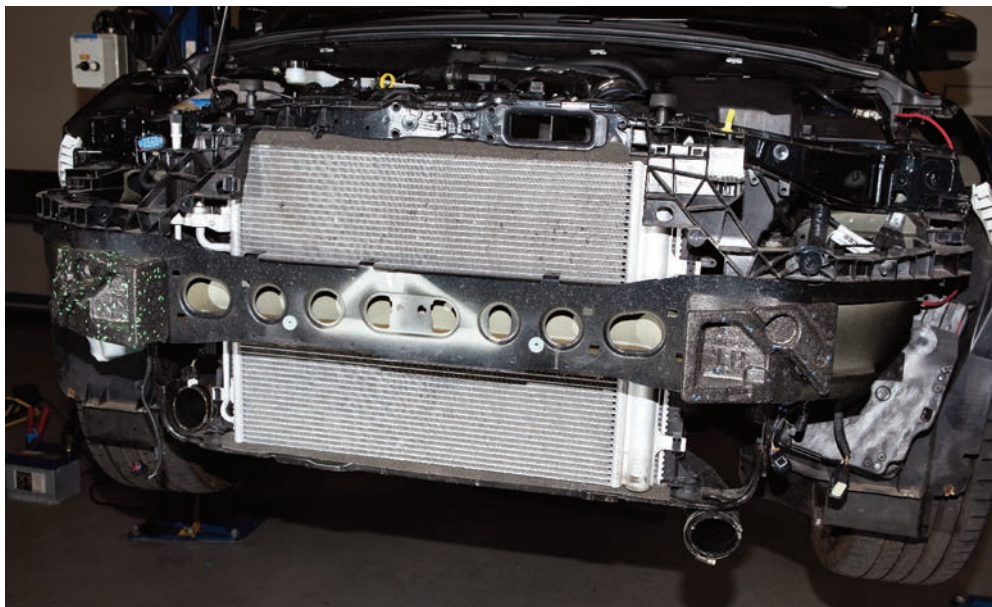
STEP 22: Using a trim tool, or similar, free the AGS loom



STEP 23: Manouver the AGS free of the two clips on either side and then remove the complete assembly



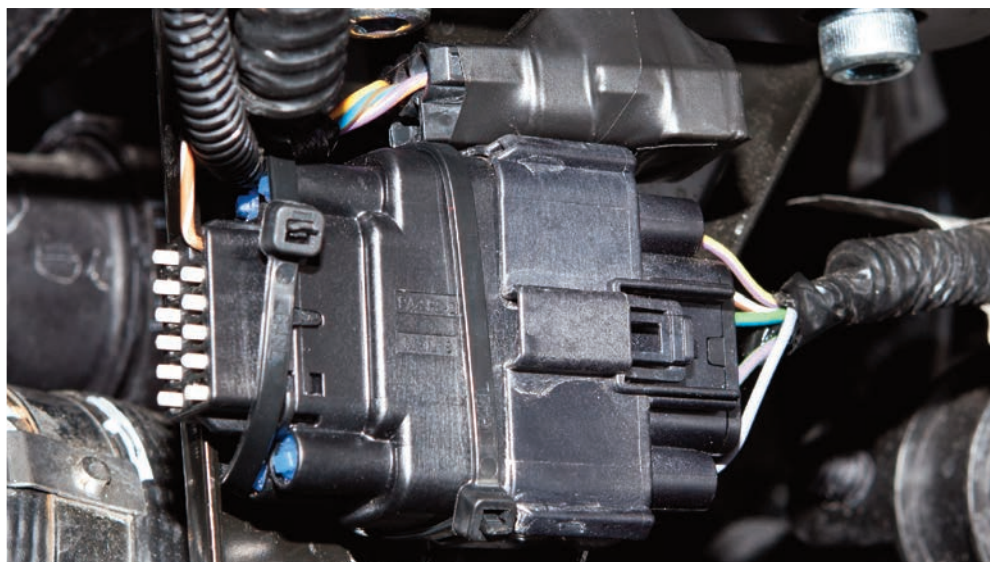
REF: The front of the vehicle should now look like this (US vehicles may vary slightly)



STEP 24: Insulate the AGS loom connector that's still remaining...



... and position it securely - a suitable location can be seen below



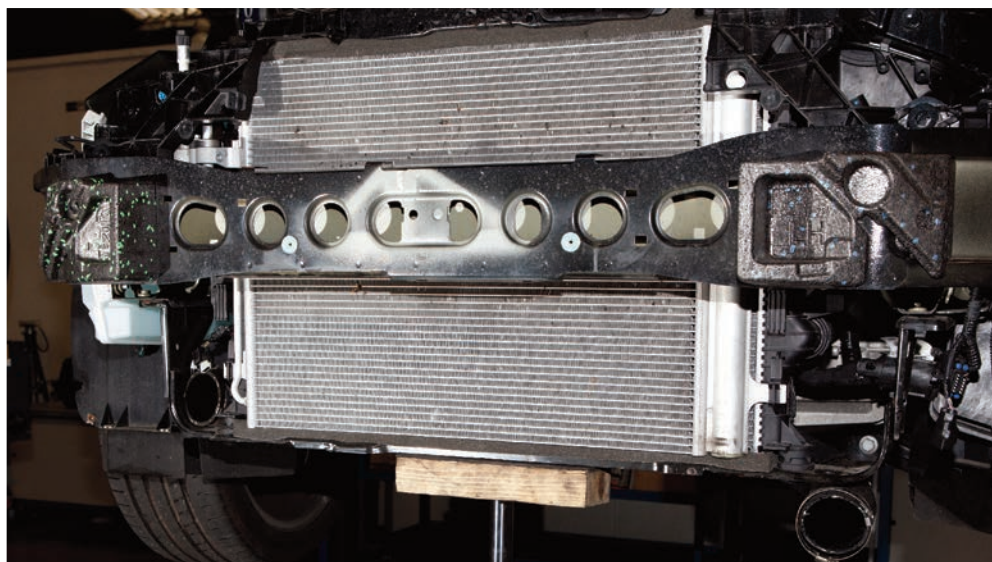
STEP 25: Using a trim tool, or similar, free the locating mount for the horn loom



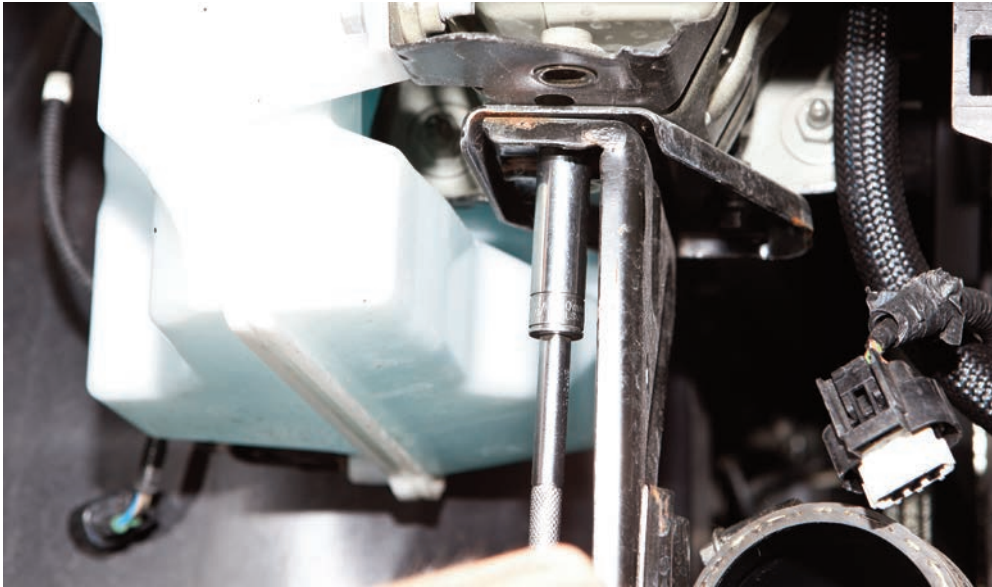
STEP 26: Feed the horn loom back under the headlight - towards the wheel arch liner



STEP 27: Use a bottle jack or suitable stand to take the weight of the radiator / cradle



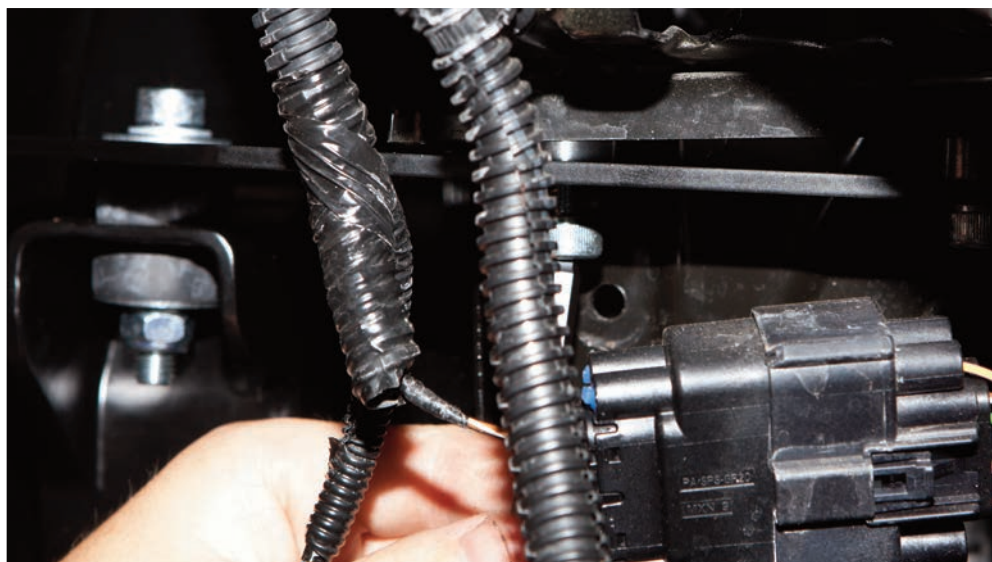
STEP 28: Remove the radiator cradle bolts on both sides



STEP 29: Position the mountune intercooler into place (you will need two people)



STEP 30: The side brackets fit underneath the radiator cradle as shown in STEP 30 and 31



STEP 31: Tighten the cap-head bolts but leave a little play to help position the intercooler



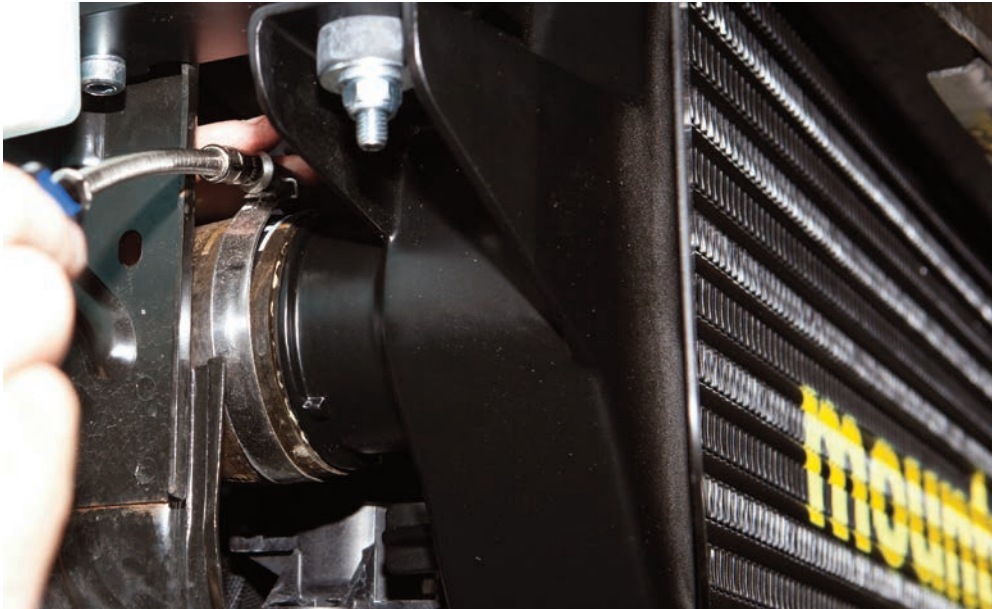
STEP 32: Ensure the intercooler is sitting as far to the left as possible; get someone to hold this in position...



... then fully tighten the cap head bolts. Note: the shorter bolt is used on the LHS



STEP 33: Refit the boost pipes and tighten the jubilee clips. Re-fit the MAP sensor connector



STEP 34: Using the supplied horn bracket, arrange the horn assembly as shown, re-connect the horn loom



STEP 35: Re-fit the original upper air deflector, front bumper and undertrays

